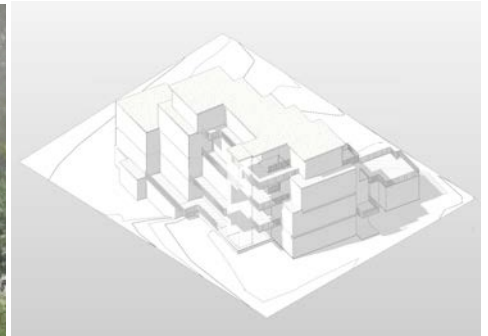


## Transdisciplinary project space for intercultural dialogue in sustainably designed building cooperative



### Our young building cooperative is looking for investing members to build a neighborhood project space for art / culture and education

The "Wild Fruits" are the first project of the POI cooperative. Towards the end of 2018, the innovative concept of the arch.id architecture firm was able to convince the state of Berlin and thus won the tender for a property at Brandenburgische Straße 15 in Berlin-Steglitz. The project is currently nearing the transition to the planning phase.

The residential project is designed to be inclusive and integrates barrier-free living space on a community-oriented living floor, and two commercial units with neighborhood-oriented offers are also planned on the street-side ground floor of the building. The smaller commercial unit is used as a studio.

For the larger unit, a neighborly designed and managed project space for art, culture and education is planned. For example, a cooperation with the Community College Steglitz with courses or workshops taking place in the space is planned, programs for intercultural exchange are to be organized based on the international networking of the residents and in this context, for example, artist-in-residence programs can also be integrated with international partner institutions from Norway, Poland, Mexico and different African countries. The building is expected to be ready for occupancy in spring 2023.

We are open to further ideas.

#### Contact

Tel.: (030) 2123 8551

E-Mail: [poi@archid.de](mailto:poi@archid.de)

POI Geno (i.Gr.)

Arch.iD

Inka Drohn

Kinzigstr. 29

10247 Berlin

[www.poivillage.berlin](http://www.poivillage.berlin)



## transparent and democratic

A building cooperative is a group of people who have deliberately chosen one another to build and live in a house together. The essence of a building cooperative consists of the basic principles of self-help, self-administration and personal responsibility. It is a democratic form of company in which all members have responsibility and the right to participate. The purpose of the cooperative is primarily to serve the members by ensuring a good, safe and socially responsible housing supply. The housing stock is adapted and managed to the needs of the members.

To become a member of a cooperative, you have to subscribe to cooperative shares. The entire project consists of a certain number of cooperative shares, which in turn are distributed among the various residential units. The amount of the shares depends on the size and location of the various apartments. The shares acquired often earn interest and the entire contribution is refunded on leaving.

For the construction and initiation of the project space, the cooperative is looking for investing members who support sustainable and meaningful projects by purchasing shares in the cooperative and who are looking for value preserving investment opportunities.

### Project „Wild Fruits“

Brandenburgische Str. 15,  
12167 Berlin  
area: **75 m<sup>2</sup>**

### Contact

Tel.: (030) 2123 8551  
E-Mail: [poi@archid.de](mailto:poi@archid.de)

POI Geno (i.Gr.)  
Arch.iD  
Inka Drohn  
Kinzigstr. 29  
10247 Berlin

[www.povillage.berlin](http://www.povillage.berlin)

Deposits to be made:	77.000,- €
(≙ 154 business shares), plus 5 % premium	3.850,- €
<b>Total:</b>	<b>80.850,- €</b>
Interest on the deposits:	<b>1,2 %</b>